

FED. ROAD DIST. NO.	STATE	F.A.P. PROJECT NO.	FISCAL YEAR	SHEET NO.	TOTAL SHEETS
6	ARK.	S-372-(3)		1	29
STATE JOB NO. 6307					1 29

STATE OF ARKANSAS  
STATE HIGHWAY COMMISSION

INDEX OF SHEETS

SHEET No.	DRAWING No.	TITLES
1	6671	Title Sheet for Job No. 6307.
2	6672	Schedule of Quantities
3	6673	Layout of Bridge over Big Maumelle River - Bridge No. 2360.
4	6674	Details of Abutments No. 1 & 2 for Bridge No. 2360 - Sh. #1
5	6675	Details of Abutments No. 1 & 2 for Bridge No. 2360 - Sh. #2
6	6676	Details of Piers No. 1 and 2 for Bridge No. 2360.
7	6677	Details of Piers No. 2 and 3 for Bridge No. 2360.
8	5142	Details of Std. 34'-0" I-Beam Spans, 30' Skew Lt. Forward - Sh. #1
9	5147	Details of Std. 34'-0" I-Beam Spans, 30' Skew Lt. Forward - Sh. #2
10	5147-A	Details of Std. 34'-0" I-Beam Spans, 30' Skew Lt. Forward - Sh. #2
11	5678	Layout of Bridge over Warthen Creek - Bridge No. 2361.
12	6679	Details of Abutments No. 1 & 2 for Bridge No. 2361.
13	6680	Details of Piers No. 1 & 2 for Bridge No. 2361 and 2369.
14	5141	Details of Standard 34'-0" I-Beam Span.
15	6681	Layout of Bridge over Nowlin Creek - Bridge No. 2362.
16	6682	Details of Abutments No. 1 & 2 for Bridge No. 2362 - Sh. #1.
17	6683	Details of Abutments No. 1 & 2 for Bridge No. 2362 - Sh. #2.
18	6684	Details of Piers No. 1, 2, & 3 for Bridge No. 2362.
19	6685	Layout of Bridge over Kinley Creek - Bridge No. 2367.
20	6686	Details of Abutments No. 1 & 2 for Bridge No. 2367.
21	5143	Details of Standard 36'-0" I-Beam Spans.
22	6687	Layout of Bridge over Little Maumelle Creek - Bridge No. 2365.
23	6688	Details of Abutments No. 1 & 2 for Bridge No. 2365.
24	6689	Details of Piers No. 1 & 2 for Bridge No. 2365.
25	5145	Details of Std. 34'-0" I-Beam Spans.
26	1888	Embankment Construction at Bridge Ends and Backfill for Structures.
27	1891	Basis for Computing Excavation for Structures.
28	2307	Details of Project Markers, R/W Markers, and Bridge Name Plates.
29	1896	Standard Barricade, warning and signs.

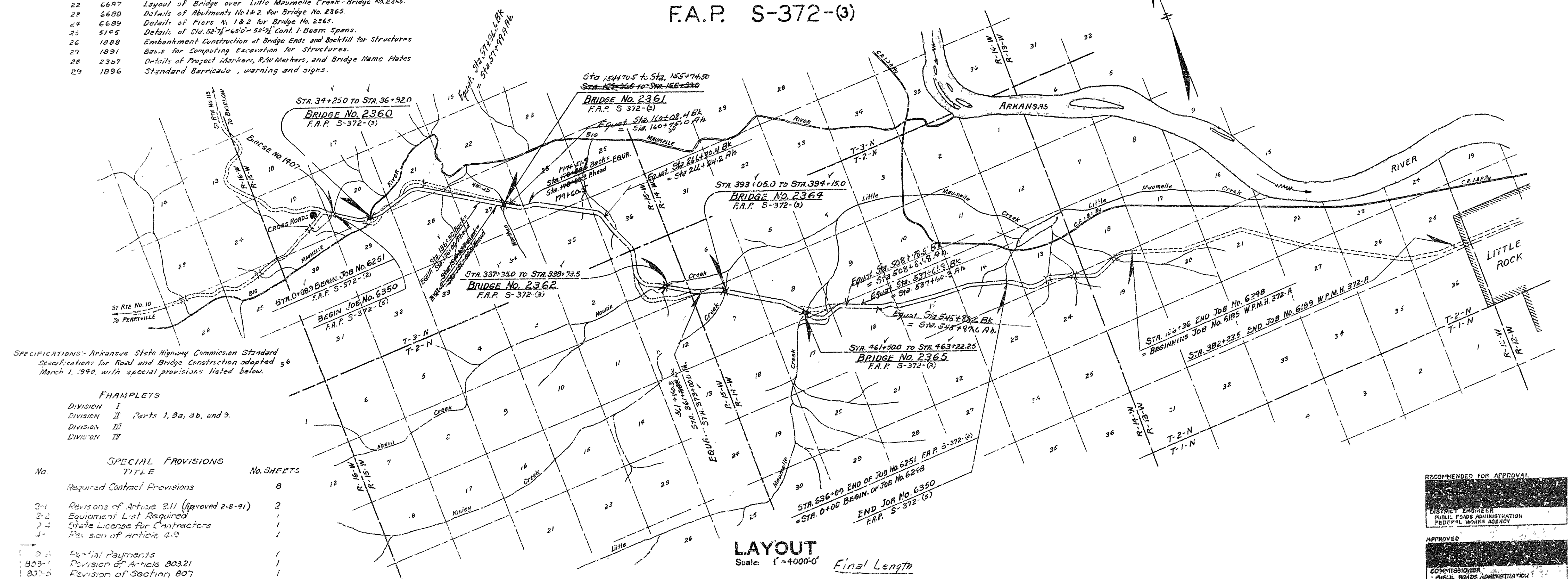
PLAN OF PROPOSED BRIDGES  
ON CROSS ROADS-LITTLE ROCK ROAD

PULASKI COUNTY

ROUTE 10 SEC. 7  
JOB No 6307  
F.A.P. S-372-(3)

QUANTITIES

ITEM No.	ITEM	QUANTITY	UNIT
105	Dry Excavation for Structures	1175	CuYd
103	Wet Excavation for Structures	1235	CuYd
103	Solid Rock Excavation for Structures	269	CuYd
SP & 602	Class "A" Concrete for Bridges	1269.1	CuYd
SP & 602	Class "S" Concrete for Bridges	661.2	CuYd
SP & 603	Reinforcing Steel	245.10	Lb.
805	Concrete Railing	1607.5	Lin. Ft.
SP & 607	Structural Steel in Beam Spans	500700	Lb.
929	Bridge Name Plates (Type "A")	9	Each
927	Bridge Name Plates (Type "B")	6	Each
S.F.	Removal of Existing Bridge Structures and Maintaining Traffic	100%	Complete item



SPECIFICATIONS: Arkansas State Highway Commission Standard Specifications for Road and Bridge Construction adopted March 1, 1940, with special provisions listed below.

SPECIAL PROVISIONS		
No.	TITLE	No. SHEETS
Required Contract Provisions 8		
2-1	Revisions of Article 2.11 (Approved 2-6-91)	2
2-2	Equipment List Required	1
2-4	State License for Contractors	1
1-1	Revision of Article 4.9	1
2-3	Partial Payments	1
803-1	Revision of Article 803.21	1
804-5	Revision of Section 807	1
850-1	Engineers Field Office	1
853-1	Machine Mixing	1
Removal of Existing Bridge Structures and Maintaining Traffic 2		
Construction of Work Job 6350 & 6307 2		
Construction of Work Job 6251 & 6307 2		
Special Provision Pertaining to the Required Contract Provisions for Federal-Aid Projects 2		

LAYOUT

LENGTH OF PROJECT=	791'-9" = 0.149 MI.
LENGTH OF BRIDGES=	791'-9" = 0.149 MI.
LENGTH OF EMBANKMENT=	
LENGTH OF JOB=	791'-9" = 0.149 MI.

Final Length

REVISIONS: Structural Steel Quantity, 10-24-96, W.C.H.  
Special Provisions, 2-22-97, W.C.H.

BRIDGES No. 2360, 2361, 2362, 2365 & 2367  
DRAWING No. 6671

RECOMMENDED FOR APPROVAL

DISTRICT ENGINEER  
PUBLIC WORKS ADMINISTRATION  
FEDERAL WORKS AGENCY

APPROVED

COMMISSIONER  
PUBLIC WORKS ADMINISTRATION  
FEDERAL WORKS AGENCY

APPROVED

CHAIRMAN - STATE HIGHWAY COMMISSION

APPROVED

STATE HIGHWAY ENGINEER



FED. ROAD DIST. NO.	STATE	F. A. P. PROJECT NO.	FISCAL YEAR	SHEET NO.	TOTAL SHEETS
6	ARK.	S-372-(9)		2	29
STATE JOB NO. 6307				2	29

## SCHEDULE OF BRIDGE QUANTITIES

FED. AID PROJ.	BRIDGE NO.	CROSS NO.	ITEM NO.	103	103	103	SP-802	SP-802	SP-803	805	SP-807	929	929	S.P.		
			ITEM	UNIT OF BRIDGE	UNIT	DRY EXCAVATION FOR STRUCTURES	WET EXCAVATION FOR STRUCTURES	SOLID ROCK EXCAVATION FOR STRUCTURES	CLASS "A" CONCRETE FOR BRIDGES	CLASS "S" CONCRETE FOR BRIDGES	REINFORCING STEEL	CONCRETE RAILING	STRUCTURAL STEEL IN BEAM SPANS	BRIDGE NAME PLATES (TYPE "A")	BRIDGE NAME PLATES (TYPE "B")	REMOVAL OF EXISTING BRIDGE STRUCTURES AND MAINTAINING ROAD COMPLETE ITEM
						CUYD.	CUYD.	CUYD.	CUYD.	CUYD.	L.B.	LIN. FT.	L.B.	EACH	EACH	
F-372-(3)	2360	X031	ABUTMENT No.1		138			83.93		6370	12	590	1			
			PIER No.1		139	63	12	52.22		5580						
			PIER No.2			60	14	62.85		6460						
			PIER No.3			36	16	62.85		6460						
			PIER No.4		139	61	14	52.22		5580						
			ABUTMENT No.2		159			83.93		6370	12	590	1			
			ONE STD. 34'-0" I-BEAM SPAN						28.70	5250	68	19190				
			STD. 60'-9"-75'-0"-60'-9" CONT. I-BEAM SPAN UNIT						163.10	29880	393	152920				
			ONE STD. 34'-0" I-BEAM SPAN						28.70	5250	68	19190				
			TOTALS FOR BRIDGE No. 2360		575	270	56	412.00	220.50	77200	553	192490	2			
	2361	X031	ABUTMENT No.1		36	59	9	53.19		5780	13	520		1		
			PIER No.1		16	45	8	27.26		3530						
			PIER No.2		16	45	8	27.26		3530						
			ABUTMENT No.2		62	51	14	53.19		5780	13	520		1		
			THREE STD. 34'-0" I-BEAM SPANS						86.20	15600	204	55770				
			TOTALS FOR BRIDGE No. 2361		130	200	39	160.90	86.20	34220	230	56810		2	20%	
	2362	X031	ABUTMENT No.1		66	106	15	89.00		7960	12	590		1		
			PIER No.1			17	9	32.11		3730						
			PIER No.2			32	8	32.11		3730						
			PIER No.3		17	36	8	32.11		3730						
			ABUTMENT No.2		106	111	13	91.07		7960	12	590		1		
			FOUR STD. 34'-0" I-BEAM SPANS						114.80	21000	272	76760				
			TOTALS FOR BRIDGE No. 2362		189	302	53	276.40	114.80	45110	296	77940		2		
	2364	X031	ABUTMENT No.1		132	69	17	66.64		5850	13	520		1		
			PIER No.1			15	11	30.91		3870						
			PIER No.2			39	11	30.91		3870						
			ABUTMENT No.2		5	53	14	66.64		5850	13	520		1		
			THREE STD. 36'-0" I-BEAM SPANS						91.40	16380	216	60000				
			TOTALS FOR BRIDGE No. 2364		137	176	53	195.10	91.40	35820	242	61040		2	40%	
	2365	X03	ABUTMENT No.1		72	91	18	70.32		7340	13	520	1			
			PIER No.1			67	16	42.03		4750						
			PIER No.2			42	16	42.03		4750						
			ABUTMENT No.2		72	91	18	70.32		7340	13	520	1			
			STD. 52'-75'-65'-52'-75" CONT. I-BEAM SPAN UNIT						148.30	25980	3405	111390				
			TOTALS FOR BRIDGE No. 2365		144	291	68	224.70	148.30	50160	366.5	112430	2		40%	
	TOTALS FOR JOB No. 6307				1175	1239	269	1362.10	661.20	245510	16875	500700	4	6	100%	

### SCHEDULE OF QUANTITIES FOR BRIDGES ON CROSS ROADS-LITTLE ROCK ROAD PULASKI COUNTY

ROUTE 10 SEC. 7

ARKANSAS STATE HIGHWAY COMMISSION  
LITTLE ROCK, ARK.

Drawn By: M.C.H. Date: 3-26-45  
Traced By: F.M. Date: 4-3-45  
Checked By: \_\_\_\_\_ Date: \_\_\_\_\_  
BRIDGE NO. 2360, 2361, 2362, 2364 & 2365 DRAWING NO. 6672

REVISIONS: - Structural Steel Quantities. 10-24-46. W.C.H.

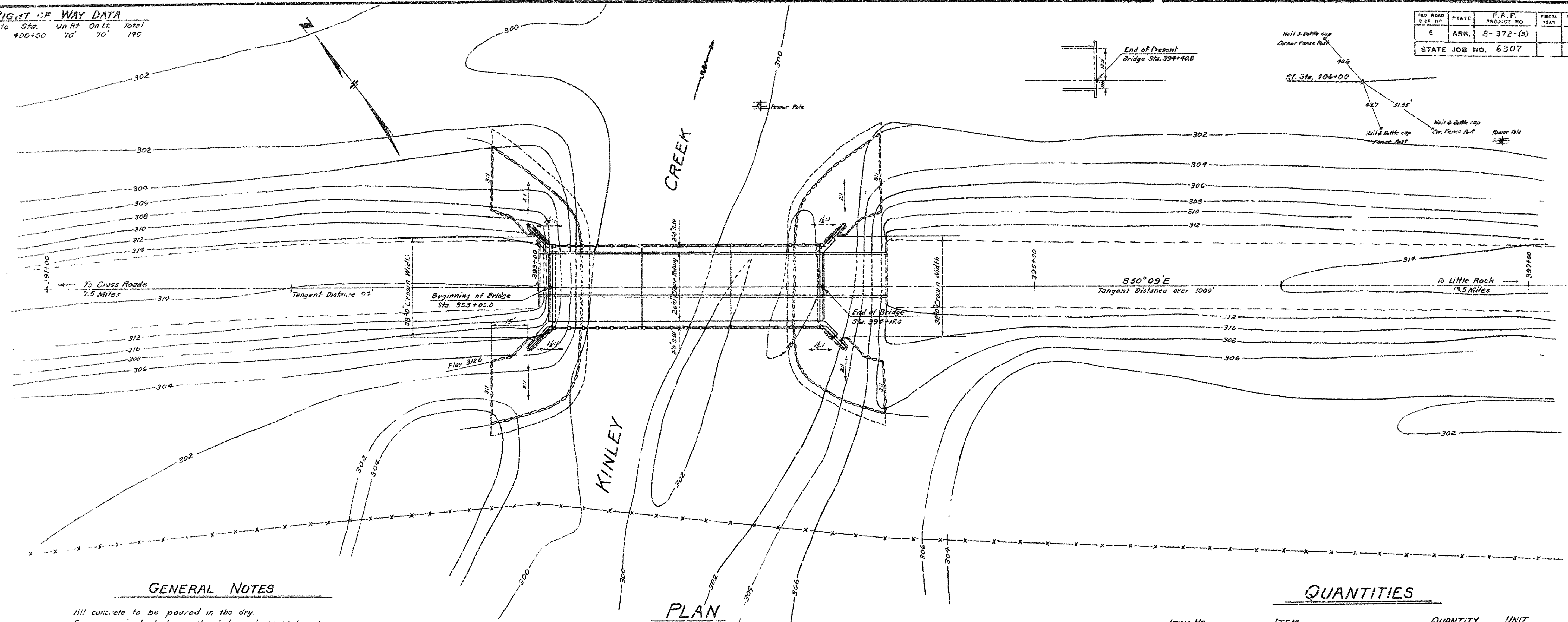
*M.B. Lawrence*  
PRINCIPAL HIGHWAY ENGINEER (BRIDGE)



**RIGHT OF WAY DATA**

Sta.	To Sta.	Un R.F.	On L.F.	Total
389+00	400+00	70'	70'	140'

FILE NO.	STATE	F.R.P. PROJECT NO.	FISCAL YEAR	SHEET NO.	TOTAL SHEETS
6	ARK.	S-372-(3)		19	25
STATE JOB NO. 6307					
19 29					

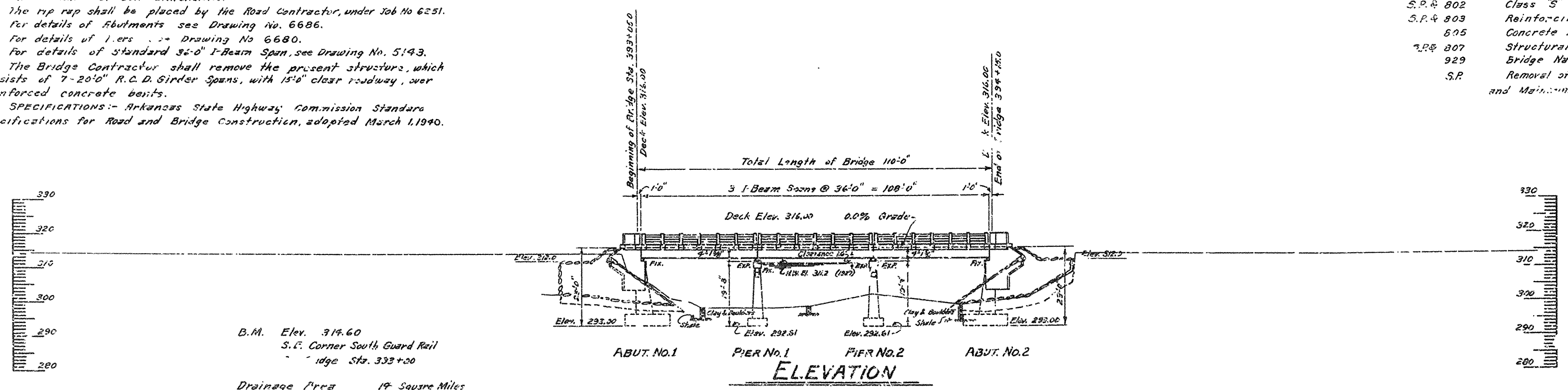


**GENERAL NOTES**

All concrete to be poured in the dry.  
Expansion joints to be constructed as shown on layout.  
Rock excavation to be made to neat lines of concrete footings.  
Care shall be exercised to avoid shattering of rock faces by excessive blasting.  
In general all construction joints in piers and abutments shall be horizontal and shall be provided with keys 1st less than 3' deep covering the middle third of both dimensions.  
The rip rap shall be placed by the Road Contractor, under Job No 6251.  
For details of Abutments see Drawing No. 6686.  
For details of Piers see Drawing No. 6680.  
For details of Standard 36" I-Beam Span, see Drawing No. 5143.  
The Bridge Contractor shall remove the present structures, which consists of 7-20' R.C.D. Girder Spans, with 15' clear roadway, over reinforced concrete bents.  
SPECIFICATIONS:- Arkansas State Highway Commission Standard Specifications for Road and Bridge Construction, adopted March 1, 1940.

**QUANTITIES**

ITEM NO.	ITEM	QUANTITY	UNIT
103	Dry Excavation for Structures	137	cu.Yd.
103	Wet Excavation for Structures	176	cu.Yd.
103	Solid Rock Excavation for Structures	53	cu.Yd.
S.P.R. 802	Class "A" Concrete for Bridges	195.1	cu.Yd.
S.P.R. 802	Class "S" Concrete for Bridges	91.4	cu.Yd.
S.P.R. 803	Reinforcing Steel	35620	Lb.
805	Concrete Paving	292	sq.Yd.
S.P.R. 807	Structural Steel in Beam Spans	61040	Lb.
929	Bridge Name Plates (Type "B")	2	Each.
S.P.	Removal of Existing Bridge Structures and Maintaining Traffic	40%	Complete Item



B.M. Elev. 314.60  
S.E. Corner South Guard Rail  
Bridge Sta. 393+20  
Drainage Area 19 Square Miles  
C=1.0 921' Opening Reg'd

DESIGN LIVE LOAD = H-20 LOADING A.A.S.H.O 1941

UNIT STRESSES:- Class "A" Concrete (n=15) 700 <sup>psi</sup>/<sub>in</sub><sup>2</sup>  
Class "S" Concrete (n=10) 1000 <sup>psi</sup>/<sub>in</sub><sup>2</sup>  
Reinforcing Steel 18000 <sup>psi</sup>/<sub>in</sub><sup>2</sup>  
Structural Steel 18000 <sup>psi</sup>/<sub>in</sub><sup>2</sup>

DESIGN FOUNDATION PRESSURES  
ABUTMENTS = 4.0 Tons/sq.  
PIERS = 3.5 Tons/sq.

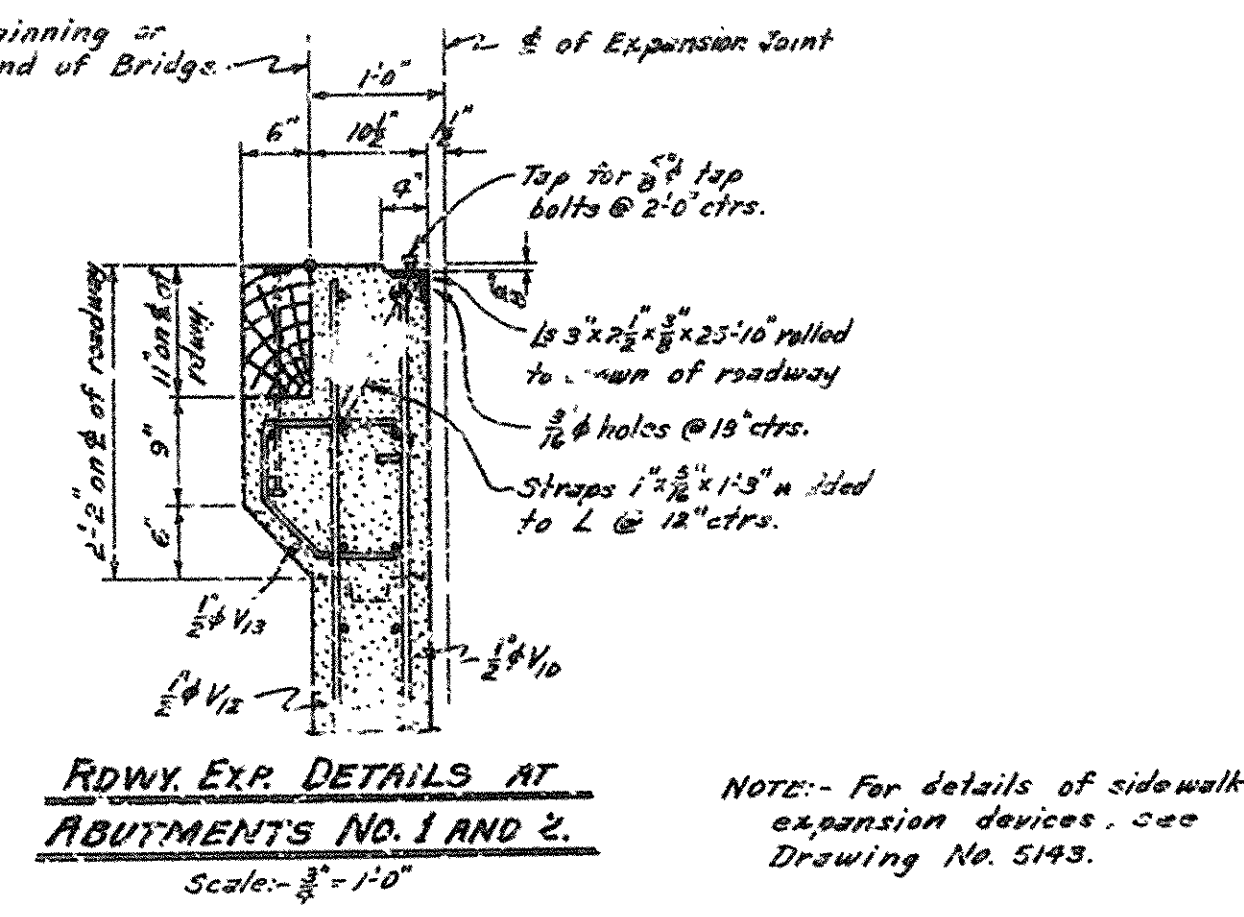
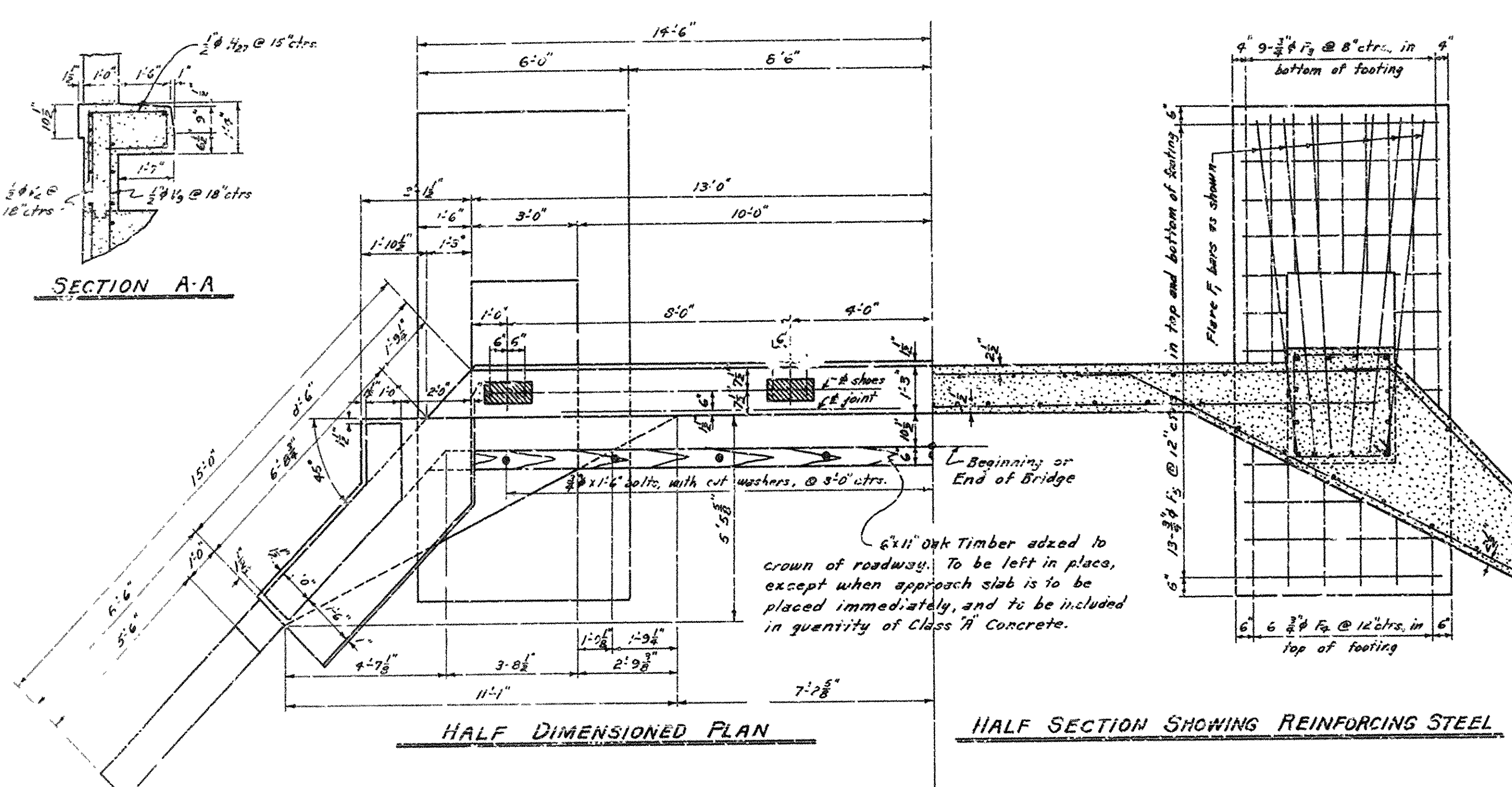
LAYOUT OF  
BRIDGE OVER KINLEY CREEK  
CROSS ROADS - LITTLE ROCK ROAD  
PULASKI COUNTY  
ROUTE 10 SEC. 7

ARKANSAS STATE HIGHWAY COMMISSION  
LITTLE ROCK, ARK.  
Drawn By: W.C.H. Date: 11-6-43  
Trace! By: W.C.H. Date: 12-10-43  
Checked By: \_\_\_\_\_ Date: \_\_\_\_\_  
BRIDGE NO. 2364 DRAWING NO. 6685  
Scale: 1 in. = 20 ft.

M.B. Laver  
PRINCIPAL HIGHWAY ENGINEER (BRIDGE)



FD. ROAD DIST. NO.	STATE	F. A. F. PROJECT NO.	FISCAL YEAR	SHEET NO.	TOTAL SHEETS
6	ARK.	5-372-(3)		20	29
STATE JOB NO. 6307				20	29



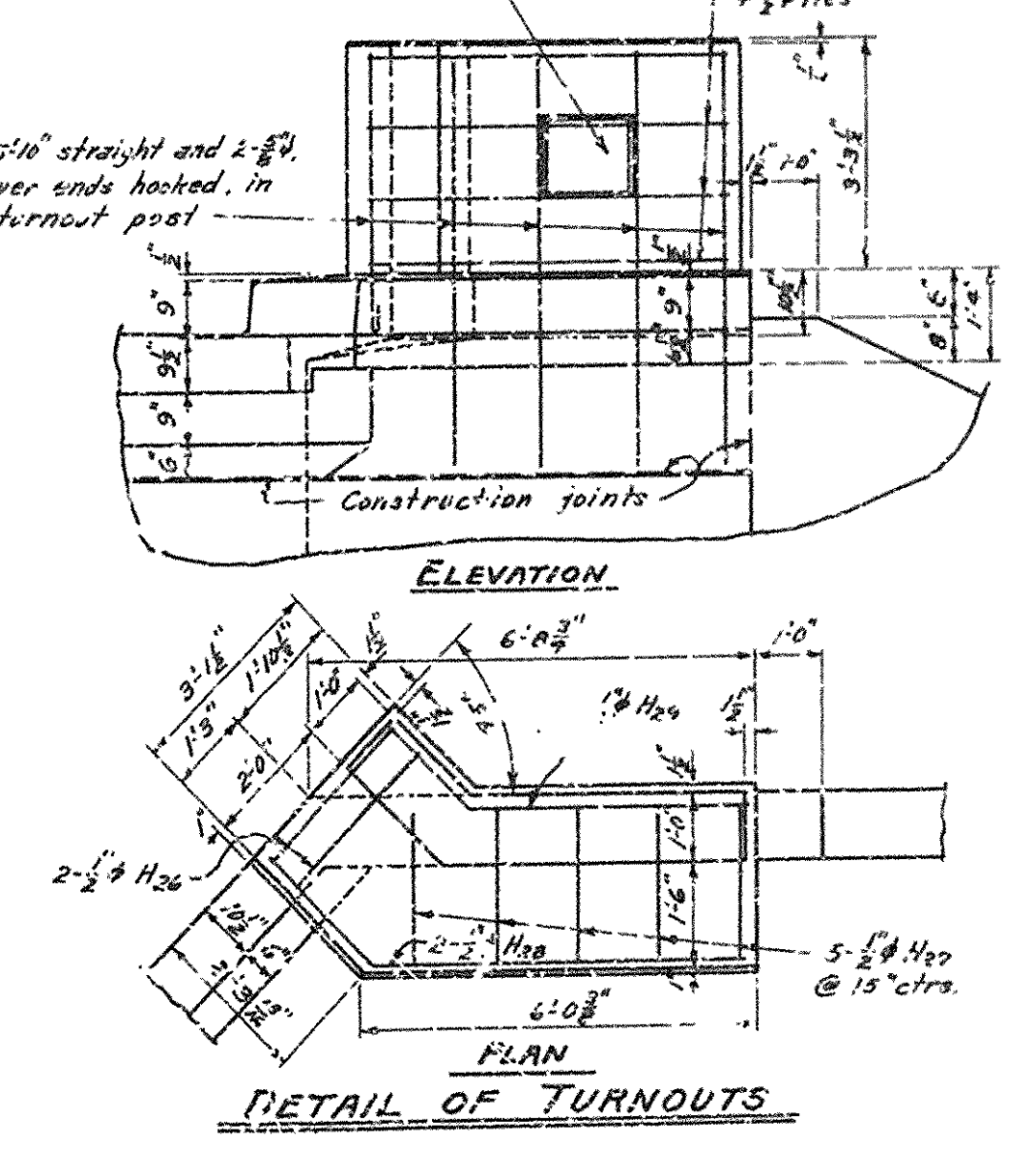
GENERAL NOTES

All concrete to be Class "A". All exposed corners to be chamfered 1/4" unless otherwise noted.  
All concrete to be poured in the dry.  
Roadway expansion devices to be paid for at the unit price bid for structural steel in beam spans.  
For details of sidewalk expansion devices see Drawing No. 5143.  
For details of Standard 36" I-Beam Span see Drawing No. 5143.  
For Layout of Bridge, No. 2362, see Drawing No. 6685.  
Oak header bolts to be paid for at unit price bid for reinforcing steel.

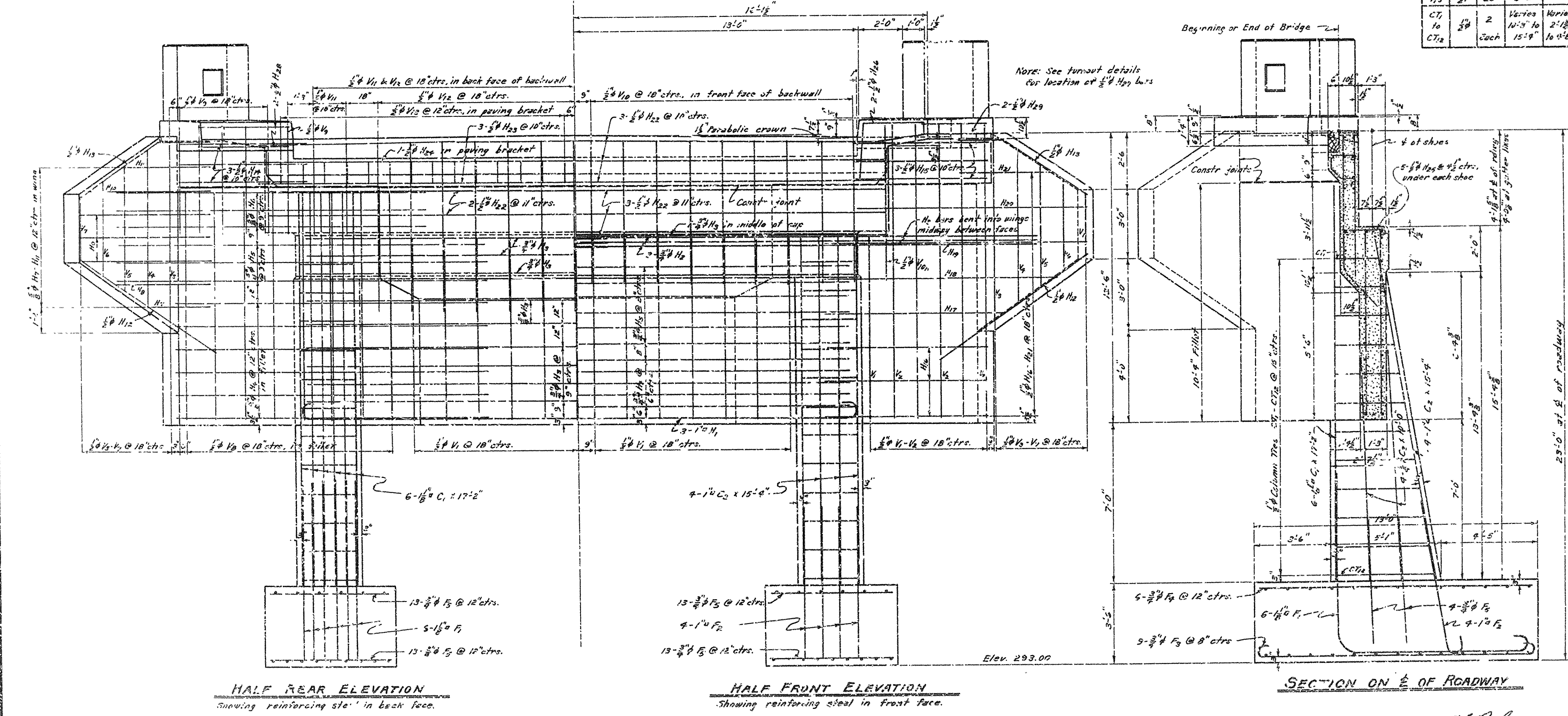
BAR LIST FOR EACH ABUTMENT

BENT BARS					STRAIGHT BARS				
MARK	SIZE	NO.	LENGTH	A	MARK	SIZE	NO.	LENGTH	
F <sub>1</sub>	1/2"	12	17'-3"		C <sub>1</sub>	1/2"	12	17'-2"	
F <sub>2</sub>	1/2"	8	7'-9"		C <sub>2</sub>	1/2"	8	15'-4"	
H <sub>1</sub>	1/2"	3	27'-6"	26'-6"	C <sub>3</sub>	3/8"	9	10'-0"	
F <sub>3</sub>	3/8"	18	14'-0"	12'-6"	F <sub>4</sub>	3/8"	12	12'-6"	
H <sub>2</sub>	3/8"	6	26'-0"	0'-0"	F <sub>5</sub>	3/8"	20	5'-6"	
H <sub>4</sub>	3/8"	12	15'-0"		H <sub>3</sub>	3/8"	21	25'-0"	
H <sub>5</sub>	3/8"	6	19'-3"	18'-3"	H <sub>7</sub>	3/8"	2	4'-2"	
H <sub>6</sub>	3/8"	6	10'-6"	13'-6"	H <sub>8</sub>	3/8"	2	6'-6"	
H <sub>12</sub>	3/8"	5	9'-0"		H <sub>9</sub>	3/8"	6	8'-9"	
H <sub>14</sub>	3/8"	6	8'-0"	7'-6"	H <sub>10</sub>	3/8"	2	8'-3"	
H <sub>15</sub>	3/8"	6	8'-0"	6'-6"	H <sub>11</sub>	3/8"	2	5'-3"	
H <sub>16</sub>	3/8"	6	10'-0"	8'-3"	H <sub>12</sub>	3/8"	4	9'-6"	
H <sub>17</sub>	3/8"	2	11'-0"	9'-3"	H <sub>13</sub>	3/8"	2	6'-6"	
H <sub>18</sub>	3/8"	2	14'-3"	12'-3"	H <sub>14</sub>	3/8"	2	28'-3"	
H <sub>19</sub>	3/8"	2	16'-6"	18'-6"	H <sub>15</sub>	3/8"	8	28'-3"	
H <sub>20</sub>	3/8"	2	14'-9"	13'-0"	H <sub>16</sub>	3/8"	3	29'-3"	
H <sub>21</sub>	3/8"	4	7'-8"	5'-8"	H <sub>17</sub>	3/8"	1	30'-9"	
H <sub>22</sub>	3/8"	9	5'-10"	5'-5"	V <sub>1</sub>	3/8"	27	7'-11"	
V <sub>12</sub>	3/8"	13	8'-0"	5'-9"	V <sub>2</sub>	3/8"	10	12'-3"	
H <sub>23</sub>	3/8"	20	2'-3"	1'-10"	V <sub>3</sub>	3/8"	9	7'-11"	
H <sub>24</sub>	3/8"	1	7'-8"		V <sub>4</sub>	3/8"	4	6'-11"	
H <sub>25</sub>	3/8"	10	7'-0"		V <sub>5</sub>	3/8"	4	5'-6"	
V <sub>13</sub>	3/8"	20	3'-2"		V <sub>6</sub>	3/8"	4	4'-2"	
C <sub>1</sub>	3/8"	2	14'-3"	12'-3"	V <sub>7</sub>	3/8"	16	9'-10"	
C <sub>2</sub>	3/8"	2	15'-9"	16'-0"	V <sub>8</sub>	3/8"	12	4'-9"	
					V <sub>9</sub>	3/8"	18	6'-3"	
					V <sub>10</sub>	3/8"	4	4'-0"	
					V <sub>11</sub>	3/8"	2	6'-0"	

Recessed panels 16" x 16" deep on roadway side only. Place Type "B" Bridge Name Plates on right hand turnouts only.

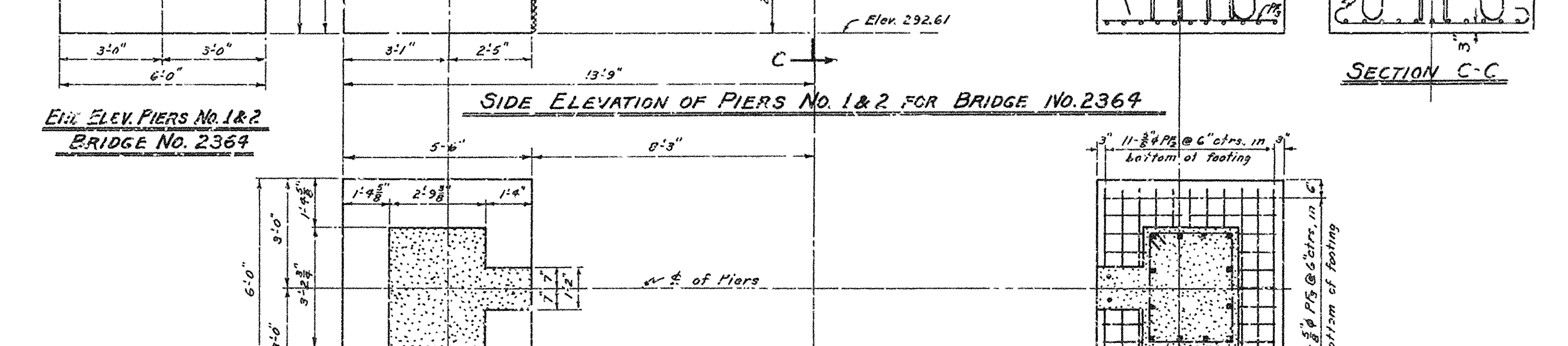
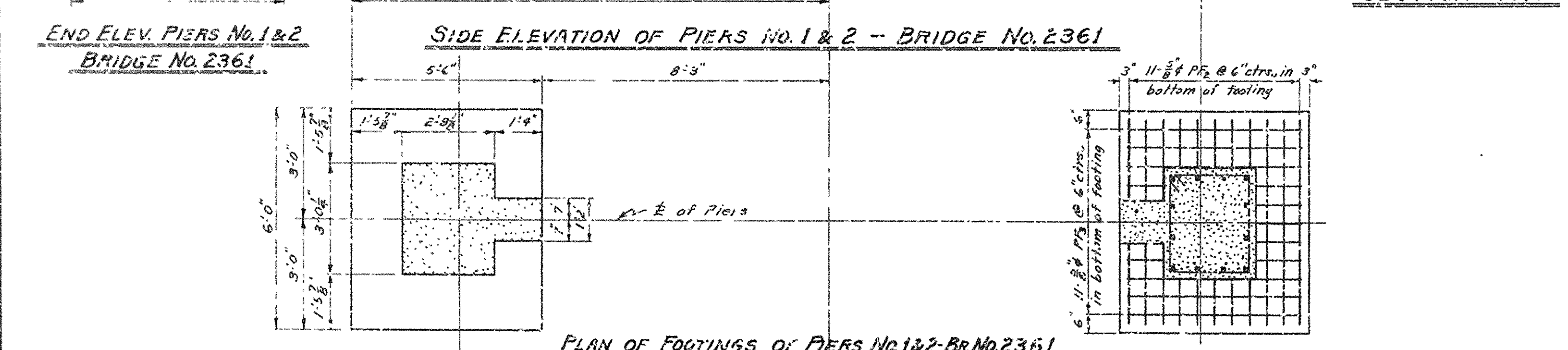
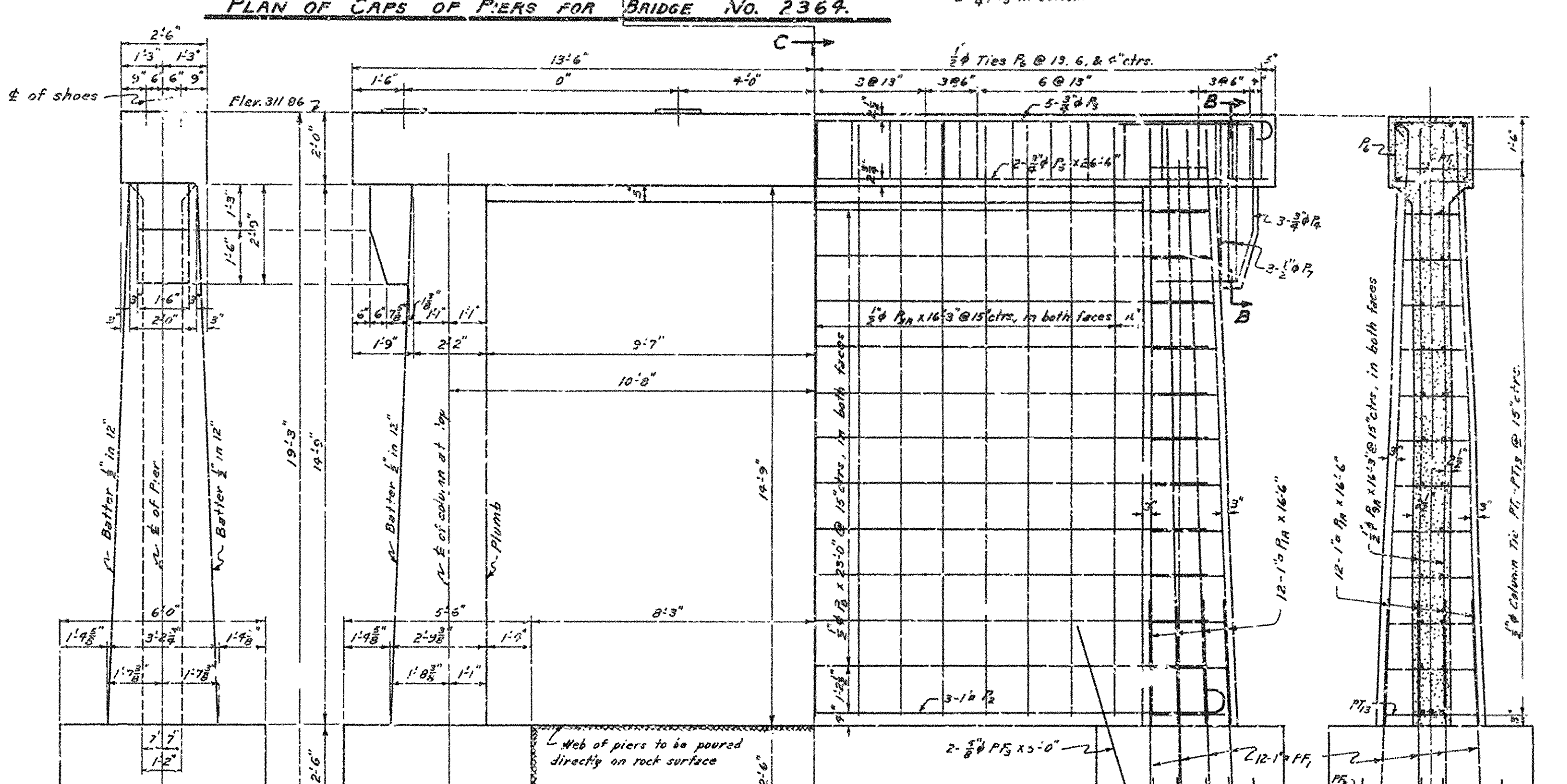
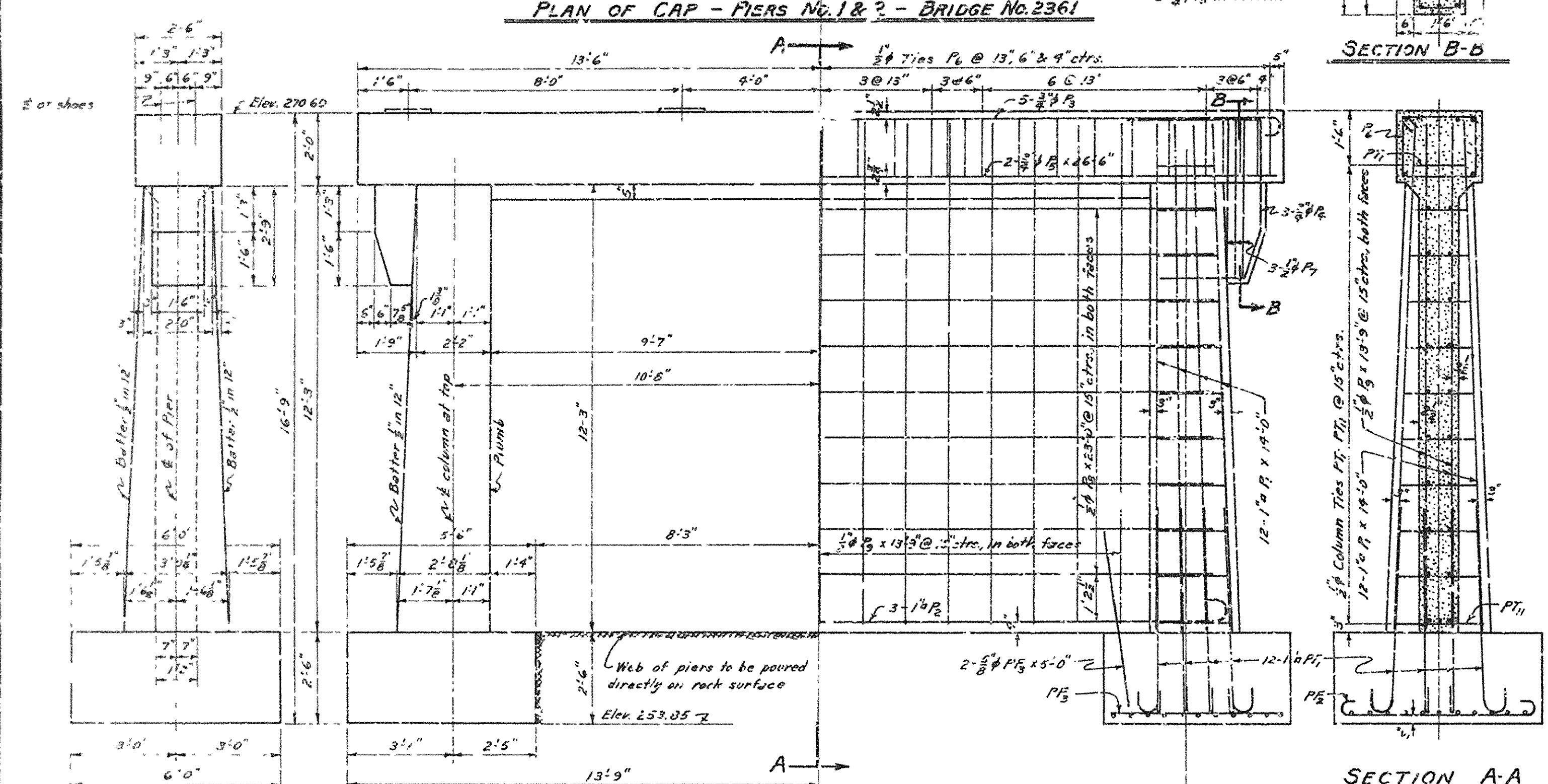
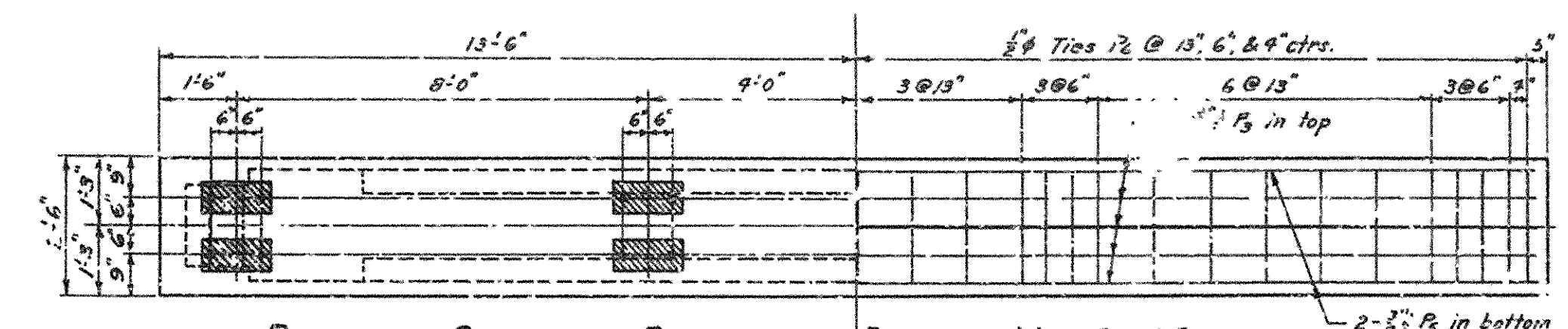
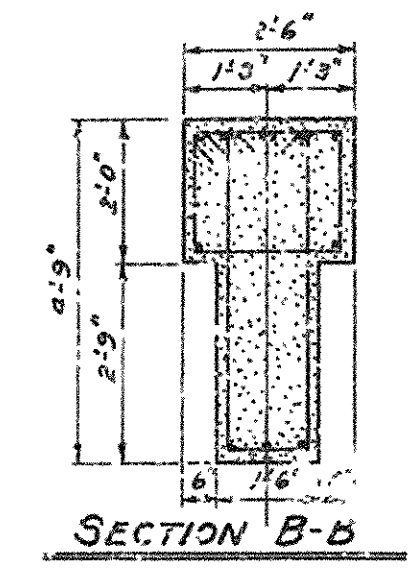
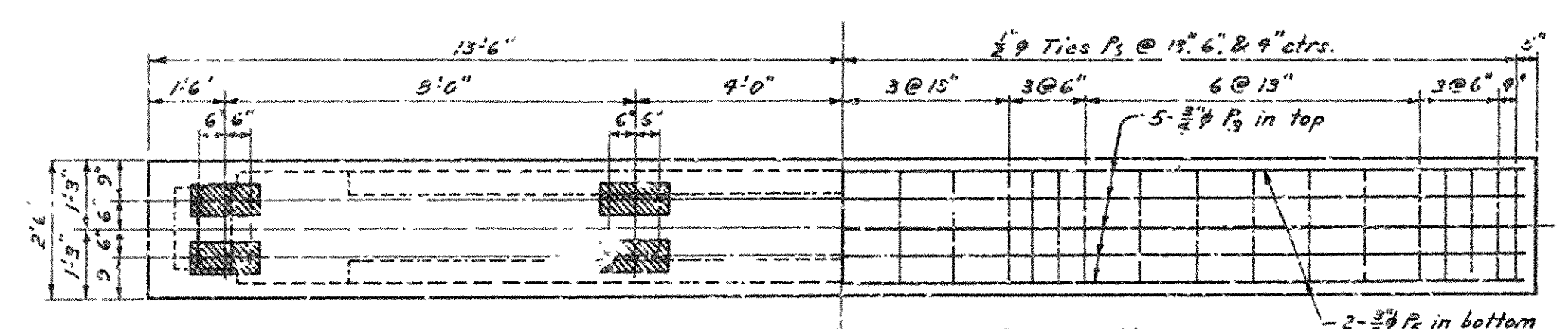


DETAILS OF ABUTMENTS NO. 1 & 2  
BRIDGE OVER KINLEY CREEK  
CROSS ROADS-LITTLE ROCK ROAD  
PULASKI COUNTY  
ROUTE 10 SEC. 7  
ARKANSAS STATE HIGHWAY COMMISSION  
LITTLE ROCK, ARK.  
Drawn By: W.C.H. Date: 1-28-46  
Traced By: J.C.H. Date: 3-28-45  
Checked By: \_\_\_\_\_ Date: \_\_\_\_\_  
BRIDGE NO. 2364 DRAWING NO. 6686





FED. ROAD DIST. NO.	STATE	F.A.P. PROJECT NO.	FISCAL YEAR	SHEET NO.	TOTAL SHEETS
0	ARK.	5-272-(3)		13	29
STATE JOB NO. 6307				13	29



BAR LIST FOR PIERS OF BRIDGES NO. 2361 AND 2364

BENT BARS										STRAIGHT BARS									
MARK	SIZE	NO. REQ'D PER PIER		BR. No. 2361	BR. No. 2364	LENGTH	A	B	BENDING DIAGRAM	MARK	SIZE	NO. REQ'D PER PIER		BR. No. 2361	BR. No. 2364	LENGTH			
		#1	#2									#1	#2				#1	#2	
P <sub>1</sub>	1"	24	24	24	24	6'-6"	5'-6"	0'-8"		P <sub>1</sub>	1"	24	24				14'-0"		
P <sub>2</sub>	1"	3	3	3	3	26'-0"	24'-0"	0'-8"		P <sub>2</sub>	1"			24	24		16'-6"		
P <sub>3</sub>	3/4"	5	5	5	5	29'-2"	26'-8"	0'-6"		P <sub>3</sub>	3/4"	2	2			2	2	36'-6"	
PF <sub>1</sub>	3/4"	22	22	22	22	6'-9"	5'-6"	0'-5"		PF <sub>1</sub>	3/4"	26	26			26	26	5'-0"	
P <sub>4</sub>	3/4"	33	33	33	33	9'-5"	2'-2"	1'-9"		P <sub>4</sub>	3/4"	18	18			22	22	23'-0"	
P <sub>5</sub>	3/4"	6	6	6	6	10'-7"				P <sub>5</sub>	3/4"	30	30					13'-9"	
P <sub>6</sub>	3/4"	2	2	2	2	Varies 7'-5"	Varies 1'-9"	Varies 1'-9"		P <sub>6</sub>	3/4"			30	30			16'-0"	
PF <sub>2</sub>	3/4"	Each	Each	Each	Each	Each	Each	Each		PF <sub>2</sub>	3/4"								
P <sub>7</sub>	1/2"					10'-7"	2'-2"	2'-3 1/2"		P <sub>7</sub>	1/2"								
P <sub>8</sub>	1/2"					10'-11"	2'-8 1/2"	2'-7 1/2"		P <sub>8</sub>	1/2"								
P <sub>9</sub>	1/2"					11'-2"	2'-10"	2'-9 1/2"		P <sub>9</sub>	1/2"								
PF <sub>3</sub>	1/2"									PF <sub>3</sub>	1/2"								

NOTE - Dimensions relating to reinforcing steel are to center of bars

NOTE: Dimensions relating to reinforcing steel are to center of bars

GENERAL NOTES

All concrete to be Class 'A' and to be poured in the dry. All exposed corners to be chamfered 1/4" unless otherwise noted.  
For Layouts see Drawings No. 6679 and 6695.  
For Details of Standard 34" I-Beam Span, see Drawing No. 5141.  
For Details of Standard 36" I-Beam Span, see Drawing No. 5193.  
Maximum design foundation pressure for piers is 3.5 tons/sq. ft.

DETAILS OF PIERS NO. 1 & 2 FOR  
BRIDGES OVER WORTHEN & KINLEY CREEKS  
CROSS ROADS - LITTLE ROCK ROAD  
PULASKI COUNTY  
ROUTE 10 SEC. 7

ARKANSAS STATE HIGHWAY COMMISSION  
LITTLE ROCK, ARK.

Drawn By: W.C.H. Date: 1-15-95  
Traced By: W.C.H. Date: 3-27-95  
Checked By: \_\_\_\_\_ Date: \_\_\_\_\_  
BRIDGE NO. 2361 & 2364 DRAWING NO. 6680

W.C.H.  
PRINCIPAL HIGHWAY ENGINEER (SRHS)



